

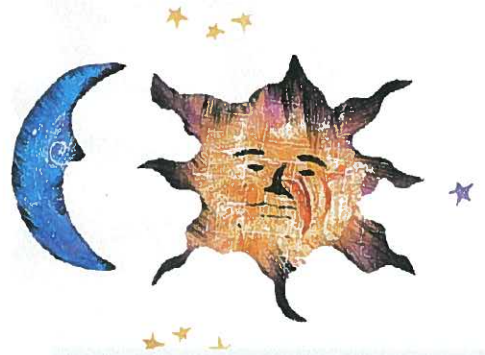
Stitch In Public Day

February is National Embroidery Month and EGA has designated Saturday, February 6, 2010 as **Stitch In Public Day**. Starlight Stitchers will stitch on a round trip ride on the METRO light rail route! We will board the train at the Sycamore and Main Station at 10:30 a.m., will stop for lunch along the way, and return to the Sycamore & Main station.

The light rail station is located West of Alma School Road, just past the East Valley Technical Institute, and East of Dobson Road, near IHOP. It is also the location of the terminal for local buses. Abundant free parking is available in the Park & Ride lot on the North side of Main. Please do not park in the gravel lot closest to Main but drive past to the designated area. Plan to arrive around 10 a.m. so you have time to purchase your rail pass. A good meeting point is near the rail pass machines on the East corner in front of the bus terminal office. All-day passes are available for \$3.50 (adults) and \$1.75 seniors (65+). Both cash and bank/credit cards are accepted. Make sure you choose to validate your pass when purchasing. (Do not validate a pass if you purchase it in advance, wait until the 6th and validate it prior to boarding the train.)

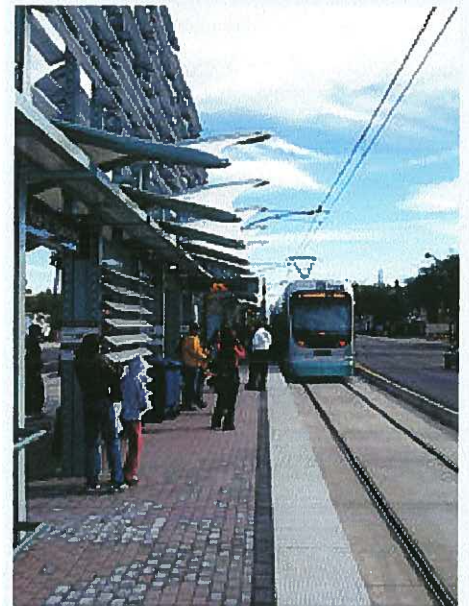
Plan to take a relatively easy project to work on (beads are NOT a good idea). The lighting on the train is good, but there is some motion. Kissing Pillow supplies will be available if you would prefer to stitch one of those. Wear something comfortable - you may want to wear something to cover your arms - the trains are air conditioned/heated and are generally comfortable. A decision on a lunch stop can be made along the trip! The round trip, including lunch should take between 3 and 4 hours.

The folks at METRO Light Rail are aware of this stitching event and would like pictures and a follow up article for the METRO NEWS, so a camera will be on hand to document the event!



Phoenix

METRO Light Rail



Pictures of the Trains courtesy of
Phoenix Metro Light Rail
Website: valleymetro.org