

Nighttime News

STARLIGHT STITCHERS Chapter of
The Embroiderers' Guild of America, Inc.

Jan-Feb 2010

New Year - New Look!

Happy New Year!

The *Nighttime News* will be coming to you every two months, bringing you chapter information relating to programs, activities, upcoming workshops fundraising, helpful stitching tips, charts, as well as the latest news from EGA and the Pacific Southwestern Region.

If you have news to share, or want something specific to include in a future newsletter, please let me know and I'll do my best to include it. *Gloria Zanella, Editor*

^ ^ ^ ^ ^ ^

PROGRAMS FOR 2010

Program materials will be distributed at the January 11 meeting to those who have signed up for the Rainbow Gallery Fibers Program. For those signed up for the Holiday Brooch and the EGA Hearts project, the supply lists and sharing of supplies will be discussed.

A proposed schedule for the rest of 2010 is as follows:

February - Rainbow Gallery Fibers

March - EGA Hearts

April - Holiday Brooch (Large flower petal) Note: Large and small are worked similarly

May - Open Stitching

June - Rainbow Gallery Fibers

July - EGA Hearts Project

August - Holiday Brooch
(start on fringe)

September - Open Stitching

October - Rainbow Gallery Fibers

November - Holiday Brooch

December - Holiday Party

Show & Tell of your completed projects is encouraged, and charms will continue to be available for completed EGA projects.

EGA Has a New Home!

Lorie Welker, EGA President, has sent information about the completion of the EGA Headquarters move! Look for all the details on page 2.

February 6 Stitch In Public Day

Have you taken a trip on the Phoenix Metro Light Rail yet??

Starlight Stitchers will STITCH IN PUBLIC on the Metro Light Rail. Meeting time, location, tickets and trip details can be found on page 6..

EGA HQ

Contact
New Location:

2000 Grasmere Drive
Louisville, Kentucky

New Mailing Address:

1335 Bardstown Road
Suite 157
Louisville, KY 40202

Phone Number:

(502) 589-9656

Fax Number:

(502) 584-7900

E-mail Addresses:

Visit the EGA website for
specific contacts info:

egausa.org

EGA Mission Statement:

To stimulate appreciation
for and celebrate the
heritage of embroidery by
advancing the highest
standards of excellence in
its practice through
education, exhibition,
preservation, collection
and research.

EGA HQ

After many months of agonizing over our options and under the advice of our attorney, we have ended our lease at 426 West Jefferson. I'm sure this will be an ongoing legal matter and therefore discussion concerning the specifics will be minimal. Our final determination to exit the building and end the lease is due to two environmental studies that indicate we have grounds for concern with conditions in the building. While our landlord did take steps to clean the basement and reduce the potential for runoff to enter the basement, the follow-up environmental report indicated there were still concerning issues. Our documented concerns with the building were sent to the landlord mid-September and we ended the lease on December 31.

*We have entered into a month to month lease at **2000 Grasmere Drive in Louisville**. Our new office is located in Louisville's Highlands, an area known for its historic homes, scenic parks, independent businesses and vibrant arts community. It is conveniently located near downtown major interstates and Louisville International Airport. We have procured a post office box near this office and will use this address as our primary address,*

1335 Bardstown Road, Suite 157

Louisville, KY 40204

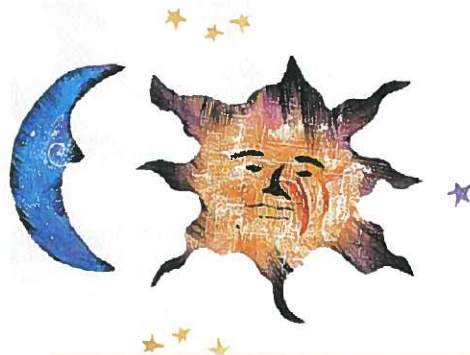
Our phone number and e-mail addresses remain the same 502-589-9656.

We have started with 700 sq. ft. and are hoping to include two additional small offices which would give us 1000 sq. ft. This space contains our mailing and copy center as well as our computer server, phone line and EGA merchandise. With the current space, two staff members may work from this office. The remainder of EGA's belongings have gone into storage and the collection continues to be housed with Gwen Nelson, Tennessee Valley Region, Region Director.

This arrangement will most likely be in place for most of 2010 and the Board will be evaluating EGA's long term goals and our next steps throughout the year. Thank you for your patience as we worked through this difficult time. The EGA staff and Board are hoping we can move forward and focus on the needs of our membership as we begin the new year.

Lorie Welker, President

Message from Starlight Stitchers President



Hello all:

A New Year is here and with it brings a new board for Starlight Stitchers. I want to thank the old board for all of the hard work they did, and welcome the new board. Thank you to all the ladies that agreed to work on the board. Also, there are still a couple of positions available if you would like to participate.

This year Starlight Stitchers will have a lot going on, especially through April. There's the Sewing and Craft Show in January, National Stitching Day along with Carolyn Sherman's workshop in February, Rae Iverson's workshop in April joining with the hosting of the region meeting. The programs for the year have also been selected. Please remember that we like to have you participate, and if there is anything you are interested in working on or learning in the future, please let the board know.

Starting this month, the newsletter will now be bi-monthly. If there is anything interesting going on in other groups you participate in, or anything you would like to share with Starlight Stitchers, please forward the information to Gloria Zanella, and she will be happy to include it in the newsletters.

Here's hoping for a wonderful year in stitching.

Merrilee

"MAGIC"

Do you need "magic" to finish those stitching projects that you have carefully tucked away in pillowcases, project bags, etc. for years?

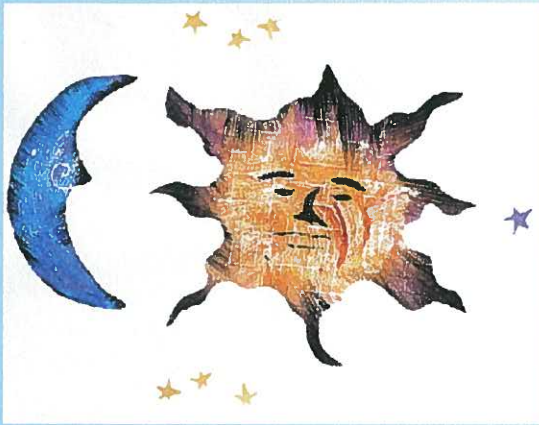
Barb Scott, by way of Barbara Loftus, has passed on the "magic" way to get those projects done!

My Actual Good

Intentions Contract

TERMS: The actual piece(s), or current photo(s), must be brought to the February meeting and contracts are to be signed for as many projects you choose to finish by the November meeting. Finished is defined as all required stitching is complete - framing & finishing is not required. If you do not fulfill the contract and finish the piece(s), a \$5 fee per unfinished piece must be paid at the November meeting. All funds received will be donated to My Sister's Place, which is our chosen outreach recipient.

It's a win-win situation for all.



Hosting PSR Meeting

Region meetings are held twice each year, and every chapter in the region has the opportunity to host a region meeting. So approximately every 10 years, Starlight Stitchers hosts a meeting. Our turn to host is April 11, 2010! In addition to that we have also scheduled a workshop on the day prior to the meeting.

Several of the requirements for hosting the meeting are already in place, but there are many things that still need to be done.

Merrilee's e-mail to the membership covered some of those items - they are mentioned below:

We officially have a room for the meeting and workshop. It will be at the American Legion in Tempe Arizona. It is a big room, with its own set of bathrooms, and has on-site facility for our food at a reasonable rate. We are also allowed to bring in food items for breakfast, dessert, etc. It is approximately 5 miles from the airport, and there are three hotels within a mile or so.

The following items still need to be completed (except for meeting day set ups) by mid-February so that the Call to Meeting can be sent out in a timely fashion:

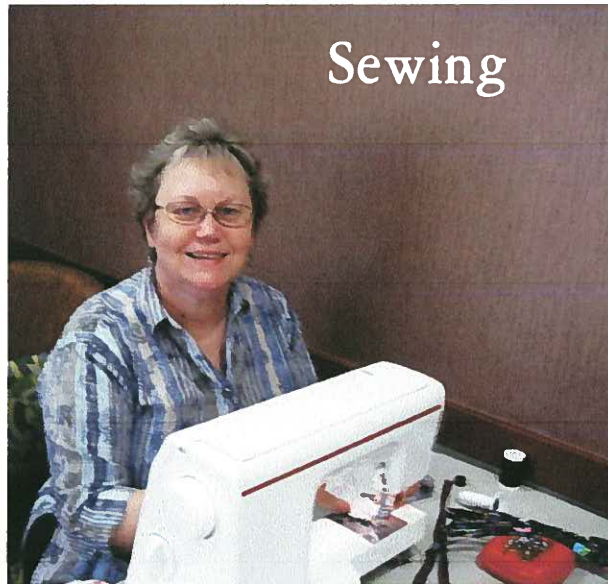
- * Preparation of maps and directions showing location of meeting and nearby hotels
- * Collecting donations for opportunity baskets and preparing them for display
- * Deciding on table decorations and set up on meeting day
- * Completion of place favors and set up on meeting day
- * Deciding on and providing morning breakfast treats to be served prior to the meeting
- * Assisting with lunch/clean up/take-down
- * Planning for a group dinner on Saturday evening

Please plan to get involved in the preparation, and plan to attend the meeting as well. It is an excellent opportunity to see and hear what other chapters are doing, hear the latest news from EGA, and meet the chapter presidents and region representatives and other members as well. Lunch will be provided to Starlight Stitchers members who attend to help out at the meeting. Merrilee Toliver and Bernice Honig, as president and region representative, will be participating on behalf of Starlight Stitchers, and would like to have as many members present to show their support and assistance in hosting the meeting. Please indicate your willingness to volunteer to either Merrilee or Bernice!

Luggage Tag Work Day at Friendship Village



**Will you help
with this
fundraising
project??**



**"Kits" will be
available at
the January
and February
meetings!**

With only 4 attending the luggage tag work day on Saturday January 9th, we weren't able to complete as many luggage tags as we need to have. If you can help by sewing some at home (instructions provided), it would help a lot. For those that can't sew, you can help by promoting the fundraiser by selling them to your family, friends and acquaintances!!

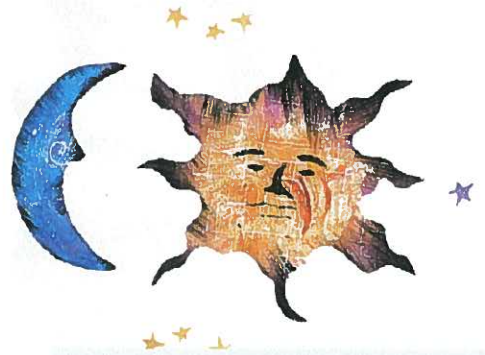
Stitch In Public Day

February is National Embroidery Month and EGA has designated Saturday, February 6, 2010 as **Stitch In Public Day**. Starlight Stitchers will stitch on a round trip ride on the METRO light rail route! We will board the train at the Sycamore and Main Station at 10:30 a.m., will stop for lunch along the way, and return to the Sycamore & Main station.

The light rail station is located West of Alma School Road, just past the East Valley Technical Institute, and East of Dobson Road, near IHOP. It is also the location of the terminal for local buses. Abundant free parking is available in the Park & Ride lot on the North side of Main. Please do not park in the gravel lot closest to Main but drive past to the designated area. Plan to arrive around 10 a.m. so you have time to purchase your rail pass. A good meeting point is near the rail pass machines on the East corner in front of the bus terminal office. All-day passes are available for \$3.50 (adults) and \$1.75 seniors (65+). Both cash and bank/credit cards are accepted. Make sure you choose to validate your pass when purchasing. (Do not validate a pass if you purchase it in advance, wait until the 6th and validate it prior to boarding the train.)

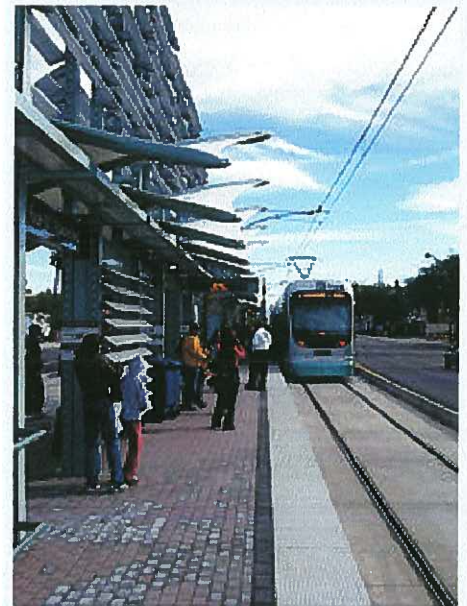
Plan to take a relatively easy project to work on (beads are NOT a good idea). The lighting on the train is good, but there is some motion. Kissing Pillow supplies will be available if you would prefer to stitch one of those. Wear something comfortable - you may want to wear something to cover your arms - the trains are air conditioned/heated and are generally comfortable. A decision on a lunch stop can be made along the trip! The round trip, including lunch should take between 3 and 4 hours.

The folks at METRO Light Rail are aware of this stitching event and would like pictures and a follow up article for the METRO NEWS, so a camera will be on hand to document the event!



Phoenix

METRO Light Rail



Pictures of the Trains courtesy of
Phoenix Metro Light Rail
Website: valleymetro.org

Snail Program

You may participate in this ongoing **Snail Program** and receive a charm by completing projects resulting from any EGA related class, workshop or seminar. If that project is completed in one year or under, you get to **select a charm** from the variety of charms available.

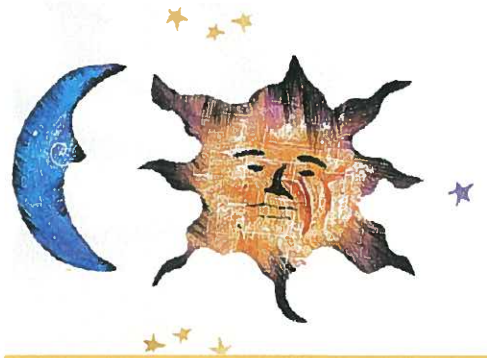
If that project is from one to three years old, and is half or less completed, please show the program chair the project prior to finishing. Once you complete the project you will receive a **turtle charm!**



If that project is three years or older, and is half or less completed, please show the program chair the project prior to finishing. Once you complete the project you will receive a **snail charm!**



This program applies to any EGA project (program from Starlight, EGA Correspondence Course, Workshop, etc.). Non-EGA projects do not apply. Please provide the date the project was originally started (class sign-up, agenda where project was originally started, etc.) as the information for which the charm project is available.



Open Stitching Saturdays

Open stitching will continue to be held throughout 2010 on the 1st Saturday of the month, at Friendship Village, 2645 East Southern Avenue between Price/Loop 101 and Dobson Road. Barb Scott has been able to reserve a room for us that has wonderful lighting and comfortable seating. Stitching time will be from 10 AM to 4 PM, ClubRoom 3 (3rd Floor). The room is listed under Barb Scott's name. Feel free to bring a lunch, however, there is a dining room on the 1st Floor of Friendship Village that serves good meals, beverages and desserts at reasonable prices. Please contact Merrilee Toliver if you need any further information or directions.

Nighttime News is the newsletter of Starlight Stitchers
Chapter of 'The Embroiderers' Guild of America, Inc.

Starlight Stitchers Officers

President: Merrilee Toliver 480-704-3552
Vice Pres: Debi Cress 480-921-0900
Secretary: Jan Weatherbee 480-596-3824
Treasurer: Shirley Hobbs 480-380-9467
Region Rep: Bernice Honig 4809-782-6129

Starlight Stitchers Committee Chairpersons

Community Liaison: Linda Fries 480-831-8083
Education/Programs:
Historian:
Membership: Marilyn Evans 480-414-5419
Newsletter: Gloria Zanella 480-832-6415
Outreach:
Ways & Means: Debi Cress 480-921-0900
Webmistress: Charli Hendrickson 480-786-1805

Website: www.starlightstitchers.org

National Headquarters

The Embroiderers* Guild of America, Inc.
2000 Grasmere Drive
Louisville, Kentucky
Phone: 502-598-6956
Fax: 502-584-7900
E-mail: egausa@aol.com
Website: <http://egausa.org>

Pacific Southwestern Region

Gloria Zanella, Director
441 S. Maple #45
Mesa, AZ 85206-5716
Phone: 480-832-6415
E-mail: glozany@cox.net
Website: www.psrega.org

Starlight Stitchers

Our purpose is to foster the highest standards of excellence in the practice of the art of embroidery through active programs of education and study and to preserve the heritage of the art of embroidery. It is EGA's policy to admit members without regard to sex, race, color, religion or ethnic origin. Members receive Needle Arts, a quarterly publication of EGA, and our privileges include the opportunity to attend guild-sponsored workshops at a minimum fee.

Annual Dues: \$50 per year for Primary membership
\$20 per year for Plural membership

.Meetings: **First Monday of each month**
Pyle Center Pyle Adult Recreation Ctr
655 E. Southern Avenue
Tempe, AZ

Next to Tempe Library at SW corner of Rural & Southern,
unless otherwise noted in the newsletter.

Guests are invited to attend two meetings. Further attendance requires membership. Membership can start at any time and is open to anyone interested in textile arts. You may obtain further information concerning membership by contacting the Membership Chairperson.

Name Tags: Members are encouraged to wear stitched name tags, which helps everyone become better acquainted. A 25 cent *no name tag* fee is assessed members failing to wear their nametag at the regular monthly meeting.

Roster of Starlight Stitchers members is for the sole use of the membership and may not be sold or distributed.

Advertising: Subject to space availability, members and non-members may advertise in the *Nighttime News*, which is published six times per year. **PER issue advertising rates are:**

Chapter personalized messages \$2.00
Business Card Size (2" x 3.5") \$10.00
Quarter Page \$12.00
Half Page \$18.00
Full Page \$36.00

Ad Deadlines: The 15th day of Feb, Apr, Jun, Aug, Oct, Dec

Reprint Privileges: Printed material in *Nighttime News*, which is copyrighted, may not be reprinted without written permission from the author. Only other EGA chapters may reprint other material, with credit given to the author and to *Nighttime News*.
Sharing Chapters, e-mail your newsletters to glozany@cox.net

23rd Biennial
Phoenix Needlework Show
January 30 – February 13, 2010

Opening Reception
Snacks with wine and other beverages
January 29th, 5 – 7 pm
Donation \$15

Arizona Historical Society
1300 N. College Avenue
Tempe, Arizona 85281

\$7.50 for Show & Museum Entry
\$3.50 for Needlework Show Only

Exhibit Hours:

Tues – Sat	10am to 4pm
Sunday	Noon to 4pm
Monday, February 1	11am to 3pm

All proceeds from the show to benefit A Stepping Stone Foundation
providing early childhood programs for at risk children since 1990, giving those
most in need the foundation to stay in school and get ahead.

www.phoenixneedleworkshow.com or PNS2010@gmail.com

Thanks for your guild's support of our show!

DISCOUNT COUPON
\$1 Off Admission
 Your ticket is good all day Thursday, Friday & Saturday!
 Admission without coupon \$10.
 Photocopies accepted. One coupon per person.

**BIGGER, BETTER & MORE!
 DON'T MISS THIS HUGE SHOW!**

Phoenix Quilt, Craft & Sewing Festival

at the Arizona State Fairgrounds
 (19th Ave. & McDowell. Enter at 17th Ave and McDowell)

JAN 28, 29 & 30, 2010

Thursday, Friday & Saturday – 10 a.m.-5 p.m.
 (Come Thursday for Early Buying Privileges)

SEWING • QUILTING • NEEDLE-ARTS • CRAFTS

See and buy the latest supplies, fabrics, notions, patterns and too s... all under one roof!

See Classes from Quilting and Sewing Superstars:
 Shar Jorgenson, Barb Callahan, Linda MacPhee,
 Laura Murray & Charlie Bement!

For additional show information visit our website at:

quiltcraftsew.com

FREE CLASSES, WORKSHOPS & DEMOS! (your ticket is good for all 3 days)

Volunteer Opportunity as Outreach

A sign-up sheet will be available at the January meeting for you to volunteer to demonstrate your embroidery skills and provide information about membership in Starlight Stitchers and EGA to attendees of the Phoenix Quilt, Craft & Sewing Festival on January 30, 2010. In the past Starlight Stitchers has shared a booth/table with the Desert Threaders Chapter EGA and we will continue that tradition in 2010. Please plan to bring some of your finished pieces showing various techniques if possible. Carpooling is also an option among those volunteering, depending on what shifts are chosen. Also, it has been customary for those volunteers to report to the Festival "office" at the entrance to the main building when you arrive, where a list of volunteers will be available and your entrance has been free. In any case, take the above coupon with you. As the coupon states, photocopies of it are accepted. More information regarding the free parking will be provided to those volunteers if indeed a parking fee will be required.

Family Arts Needlework Shop

5555 N. Seventh St, #144, Phoenix, AZ 85014
 (N. E. Corner of Missouri & 7th St.)
 Monday - Saturday 9:30 - 4:00
 602-277-0694
 www.familyartsneedlework.com

Servicing your needlework needs in the Valley for 40 years

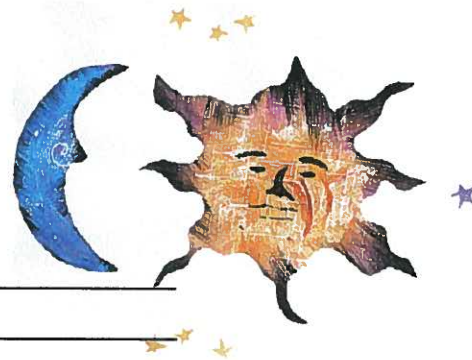
Phoenix's **NUMBER ONE** Source for Needlepoint and Knitting

Needlepoint Embellishment Classes
 with Barbara Richardson and David McCaskill

Knitting Classes • three times a week
 Call to add your name to email list

Beginner and Intermediate Classes • Private • Group • Embellishment
 Custom Framing • Finishing • Custom Canvas Design

NEW Membership Only



Name: _____

Address: _____

City: _____ State: _____ Zip: _____

Home Phone: _____ Cell Phone: _____

E-mail: _____

EGA Member Number: _____ **Dues payable: \$62.50 for Jan 2010 through May 31, 2011**

Plural Members Only:

Primary Chapter: _____

Out-of-State Address: _____

Please make check payable to: **Starlight Stitchers**

Check # _____ Date paid: _____

Mail to:

Marilyn Evans

7939 Inverness Avenue

Mesa, AZ 85209



**Note: A revised Renewal Form will be available in the
March-April *Nighttime News!***

QUAIL RUN
NEEDLEWORK, INC.

NEEDLEPOINT
THREADS
FINISHING
ACCESSORIES
SHIPPING

8989 East Via Linda
Scottsdale, Arizona 85258
www.quailrun-inc.com

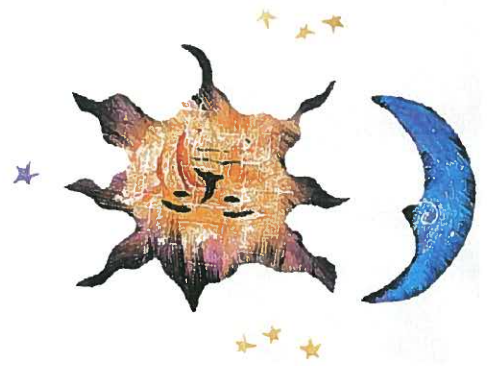
FAX (480) 551-1425
1-800-635-9750
(480) 551-1423

**Support our
advertisers !**

CREATIVE DESTINATION™

1660 South Alma School Road
Suite 108
Mesa, Arizona 85210
480-755-GEMS (4367)
480-755-0355 fax
www.creativedestination.net
or
www.2-old-beadies.com

ALL ABOUT BEADS

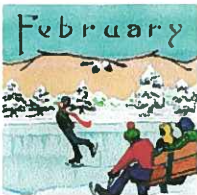


:TO

Nighttime News - Starlight Stitchers Chapter - EGA
Gloria Zanello, Editor
441 S. Maple #45
Mesa, AZ 85206-5716
(Sharing Chapters: Please use the above address)



- 11 - Starlight Stitchers Chapter Meeting 7 p.m.- Pyle Center
- 18 - Martin Luther King Jr. Birthday Observed
- 29 - Phoenix Needlework Show Opening Reception 5-7 p.m. Arizona Historical Society
- 30 through February 13 - Phoenix Needlework Show, Arizona Historical Society
- 30 - Phoenix Quilt Craft & Sewing Festival - Demonstration Day - AZ State Fairgrounds



- 1 through February 13 - Phoenix Needlework Show, Arizona Historical Society
- 6 - Stitch In Public Day - 10 a.m. Meet at Phoenix METRO Light Rail Line Sycamore & Main
- 8 - Starlight Stitchers Chapter Meeting 7 p.m. - Pyle Center
- 15 - Presidents' Day Observed
- 27 - 28 - Carolyn Sherman Workshop "Summer Surprise Necklace"
9:30 a.m. - 4:30 p.m. - Friendship Village

*Mark
Your
Calendar*



CAROLYN SHERMAN WORKSHOP

**SUMMER SURPRISE
NECKLACE**

Technique:

Beading—Herringbone stitch; peyote stitch; brick stitch; leaf and daisy stitches

Level:

Intermediate—Students should be familiar with peyote, herringbone & brick stitches

Dates: February 27 and 28, 2010
Time: 9:30 am until 4:30 pm
Cost: \$80.00 per participant

Location: Friendship Village
2645 Southern Avenue, Club Room 3
Tempe AZ 85282

Registration Deadline: January 31, 2010
Space is limited!

For additional information, call Merrilee at 480-704-3552

Carolyn Sherman's Summer Surprise Necklace

Name: _____

Address: _____

Phone: _____

Email: _____

**Please mail this form and check payable
to Starlight Stitches by January 31, 2010**

to: Merrilee Toliver
2206 E County Down Dr.
Chandler AZ 85249



RAE IVERSON WORKSHOP
MOSS CREEK DESIGNS

FENTON VASE & CLOTH

Fenton Art Glass, Limited Edition Vase
made for Moss Creek Designs.

Techniques:

Stitching is worked with silk fibers,
1 over 1, satin, eyelet, Palestrina knot,
and hemming; mitered corners.

Close ups of Vase



Close up of top corner



Date: Saturday, April 10, 2010
Time: 9:00 am until 4:00 pm
Cost: \$100.00 per participant
(includes workshop, lunch,
vase, linens and fibers)

Location: American Legion
2125 S. Industrial Park Avenue
Tempe AZ 85282

Registration Deadline: March 15, 2010
Space is limited!

For additional information, call Merrilee at 480-704-3552

Rae Iverson Workshop – FENTON VASE & CLOTH

Name: _____

Address: _____

Phone: _____

Email: _____

**Please mail this form and check payable
to Starlight Stitchers by March 15, 2010**

to: Merrilee Toliver
2206 E County Down Dr.
Chandler AZ 85249